

Anatomy Quiz Chapters 1 & 2

Match the body system to its function.

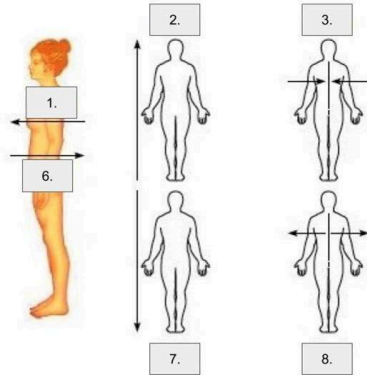
- | | |
|------------------|---|
| 1. Integumentary | a. Excretion of waste, control of fluid |
| 2. Skeletal | b. Absorption of oxygen, discharge of carbon dioxide |
| 3. Muscular | c. Fluid balance and defense against disease |
| 4. Lymphatic | d. Production of eggs in females and sperm in males |
| 5. Respiratory | e. Breakdown and absorption of nutrients, eliminating waste |
| 6. Urinary | f. Responsible for movement and posture |
| 7. Nervous | g. Protects organs, gives support, makes movement possible |
| 8. Endocrine | h. Protects, regulates temperature, sensation |
| 9. Circulatory | i. Distributes oxygen, nutrients, wastes, and hormones to the body |
| 10. Digestive | j. Produces hormones and regulates other systems |
| 11. Reproductive | k. Control, regulation, coordination of other systems, sensation and memory |

12. Put these in order from least to most complex..

Molecules, atoms, tissues, organism, organ system, cells, organs, organelles

13. Label the directions using the word bank.

Superior, inferior,
posterior (dorsal), anterior (ventral),
medial, lateral,



14. What is homeostasis?

15. Give one reason why water is important to the body.

Match the word to its meaning.

16. Carbohydrates

17. Lipids

18. Proteins

19. Catabolism

20. Anabolism

- a. The body's main energy source, composed of saccharide units
- b. Breaking down complex compounds and releasing energy
- c. Building larger complex molecules which requires energy
- d. Reserve supply of energy, insoluble in water, fats
- e. The structure of every cell, made of amino acids, include enzymes, needed for muscles